

EXCURSIONS FROM THE SQUARE

215 732 8487

www.squaretrips.com

www.facebook.com/Squaretrips

CULTURAL TOURS SINCE 1992

FREDERIC BAZILLE & more in WASHINGTON THURSDAY, JULY 6



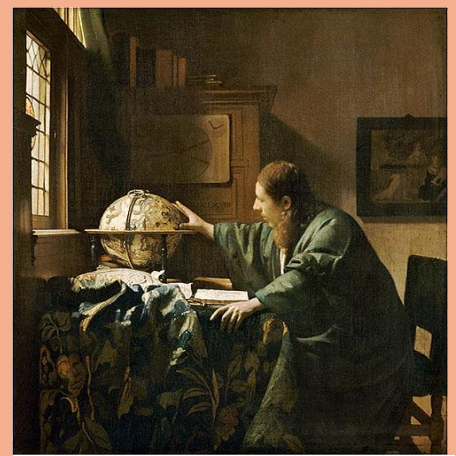
Frederic Bazille, French, 1841-1871, *Young Woman with Peonies*, spring 1870, oil on canvas, National Gallery of Art.

I became aware of **FREDERIC BAZILLE** on my first visit to the **MUSEE D'ORSAY** in the early 1990s. This exhibition at the freshly renovated **NATIONAL GALLERY OF ART** www.nga.gov brings together 74 paintings from this artist who was a part of an artistic circle in **PARIS** that included **CLAUDE MONET, ALFRED SISLEY** and **EMIL ZOLA**. His paintings were inspired by scenes of contemporary life, his being cut short at the age of 29 in battle during the Franco-Prussian War. You can also enjoy the other rich collections and exhibits at the **NATIONAL GALLERY** as well as countless other treasures on the National Mall. **COST: SPECIAL SUMMER PRICE OF \$60.** Take off an additional 10% if you also join us on Wednesday, July 12 and Wednesday, August 16 for our summer day trips to **NEW YORK CITY**. That would be **\$162** for three trips!

VERMEER and the MASTERS OF GENRE PAINTING at the NATIONAL GALLERY OF ART

THURSDAY, OCTOBER 26
SATURDAY DECEMBER 9
& SUNDAY, DECEMBER 10

We have three dates scheduled for this much anticipated exhibition. You will see 75 works by painters of the **DUTCH GOLDEN AGE**. Most are from the the third quarter of the 17th century when a particularly changing artistic climate was evident in the great Dutch cities of Amsterdam, Delft, Leiden and the Hague. There will be ten paintings by **JOHANNES VERMEER**, the most on view since the extraordinary Vermeer Exhibit at the the **NATIONAL GALLERY** more than 20 years. The cost of the bus round trip to the **NATIONAL GALLERY OF ART** is **\$75**. All Smithsonian Museums are free. Each of these trips is complimentary for everyone traveling on our **WEEK IN AMSTERDAM**, October 10-17, 2017 - details are at www.squaretrips.com



Johannes Vermeer, *The Astronomer*, 1668, oil on canvas, Musee du Louvre, Paris, acquired 1982

Payment for our day trips is by check only. Pick up points are near City Line Avenue and on Rittenhouse Square. Checks should be made payable to **EXCURSIONS FROM THE SQUARE**, and mailed **PO Box 2189, Philadelphia, PA 19103**. All sales are final. Please include your land line, cell phone numbers and email address with your check. For more information call **215 732 8487** or email ellenkay@prodigy.net.