

EXCURSIONS FROM THE SQUARE

AMERICAN
CRAFT
COUNCIL
SHOW

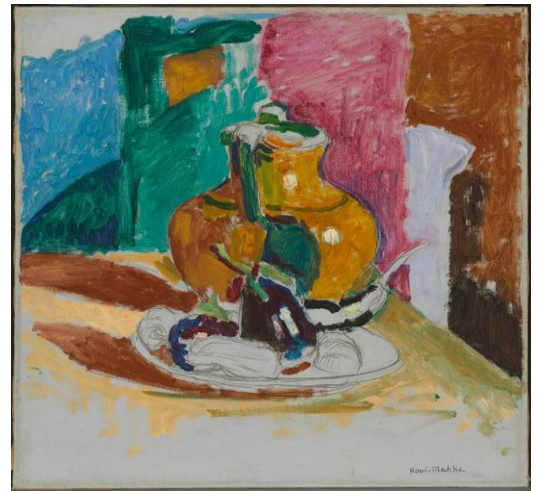
BALTIMORE CRAFT SHOW SATURDAY, FEBRUARY 25, 2017

Join our annual trip to the incomparable **AMERICAN CRAFT COUNCIL SHOW** in Baltimore. Hundreds of the nation's highest caliber artisans will sell their work in wood, glass, clay, jewelry, leather, metal, and textiles. Lunch is available at the Craft Show, but we have planned an optional visit to the extraordinary **AMERICAN**

VISIONARY ART MUSEUM nearby. There you can dine at their wonderful restaurant, **ENCANTADA**.

Also, an optional side trip will be made in the afternoon to the **BALTIMORE MUSEUM OF ART** if you don't wish to spend the whole day at the Craft Show. The **BMA** is known for its fine collections of European, American, Asian and African paintings, decorative arts and sculpture.

The cost is **\$85** which includes admission to the **BALTIMORE CRAFT SHOW**. Pick-up points are near City Line Avenue and in Center City. Payments by check only made payable to **EXCURSIONS FROM THE SQUARE** and mailed to **EXCURSIONS FROM THE SQUARE**, PO Box 2189, Philadelphia, PA 19103. All sales are final. For more information call email ellenkay@prodigy.net or call 215 732 8487, www.squaretrips.com



Henri Matisse. Yellow Pottery from Provence, 1905. The Baltimore Museum of Art. The Cone Collection.

NEW! NEW YORK DATES FOR SPRING

WEDNESDAY, MARCH 22

WEDNESDAY, APRIL 19

SATURDAY, MAY 6

The cost is **\$70** (bus only). We offer drop-offs in the theater district, mid-town and the Metropolitan Museum of Art and a convenient mid-town departure point. Early booking discount: **\$50** if we receive payment by **January 3, 2017**. – **SALE EXTENDED TO WEDNESDAY, FEBRUARY 1!!!**